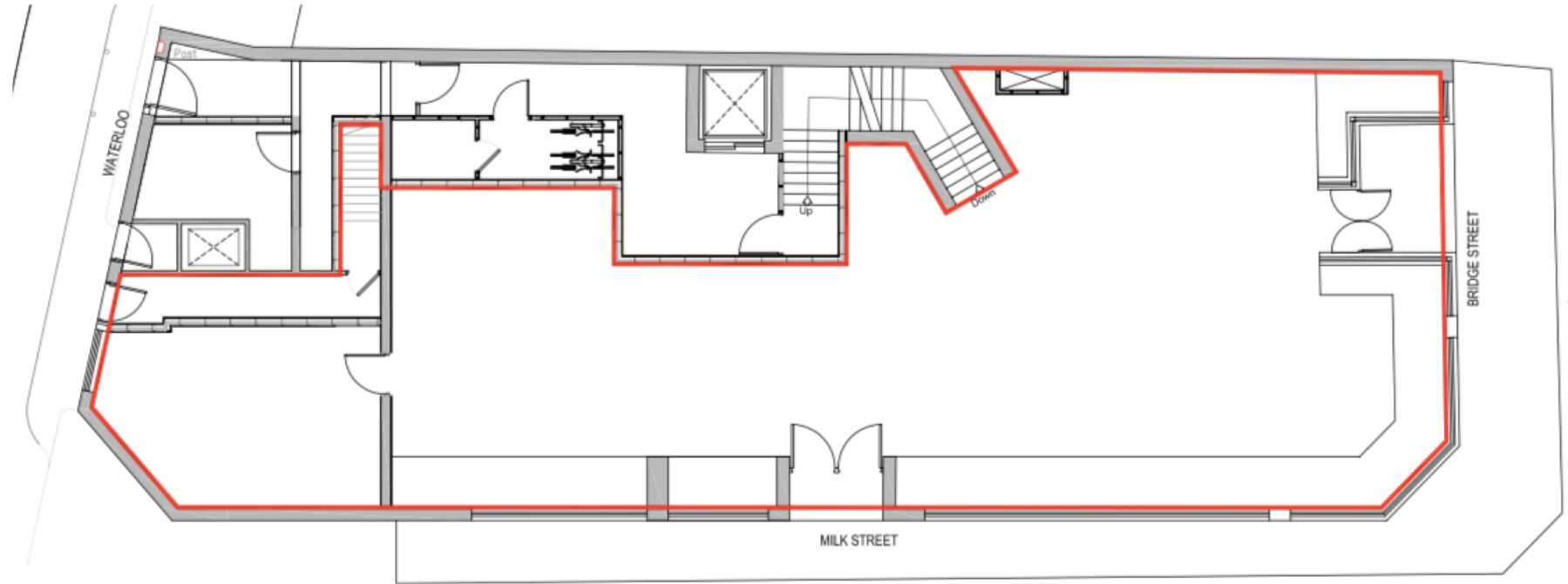


**Commercial Duplex
Ground Level**

Interior: 200.00m² / 2,152.00sqft

Bridge Street Entrance
Milk Street Entrance
Glass Shop Frontage

Benefits from A1/A3/A4 Planning



All Dimensions Are Approximate And Subject To Normal Construction Variances And Tolerances. Plans And Dimensions May Contain Minor Variations From Floor To Floor. The Square Footage On This Floor Plan Exceeds The Usable Square Footage.

Developer: Luxor Developments (Tyrers) Limited.

Design: Luxor Group (UK) Limited

Related Company: Luxor Estates (No.3) Limited

Property Address: Nicholson Lofts 14-16 Bridge Street, St Helens WA10 1NR.

Developer Reserves The Right To Make Changes In Accordance With The Terms Of The Offering Plan.