



NICHOLSON PLAZA

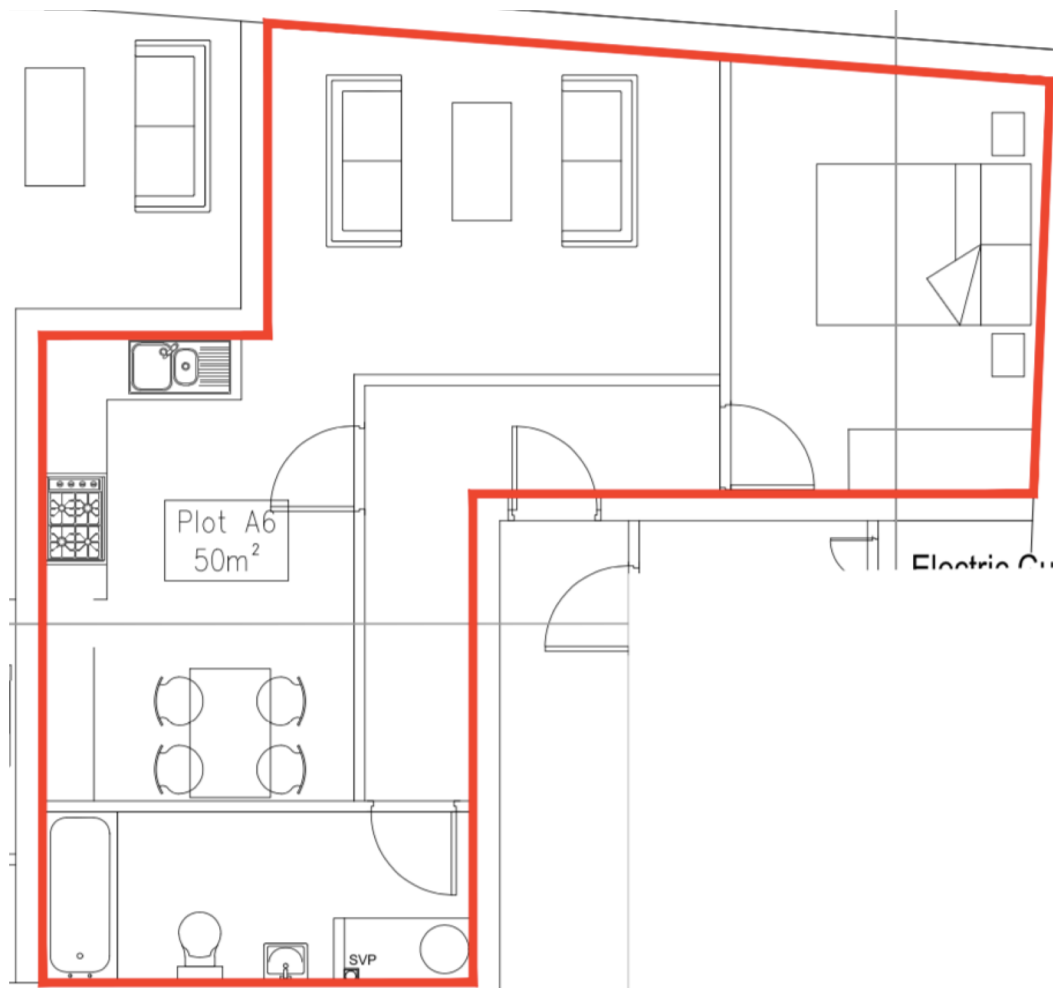
## PLOT 6 LEVEL 1

Interior: 50m<sup>2</sup> / 645.8346sqft

1 Bed Apartment  
Open Plan Lounge  
Open Plan Kitchen  
1 Bathroom

Floor To Ceiling Casement Windows  
Open Plan Kitchen  
Calacatta Porcelain Tiles  
Calacatta Kitchen Worktops  
Kilimanjaro Oak Vintage Flooring  
Energy Efficient LED Lighting

© 2019 | PJN HOLDINGS



All Dimensions Are Approximate And Subject To Normal Construction Variances And Tolerances. Plans And Dimensions May Contain Minor Variations From Floor To Floor. The Square Footage On This Floor Plan Exceeds The Usable Square Footage.

Developer: Luxor Developments (Barrow) Limited.

Design: Luxor Group (UK) Limited

Related Company: Luxor Estates (No.3) Limited

Sales & Marketing: Nicholson Media Group Limited

Property Address: Nicholson Plaza, Barrow Street, St Helens WA10 1RX.

Developer Reserves The Right To Make Changes In Accordance With The Terms Of The Offering Plan.